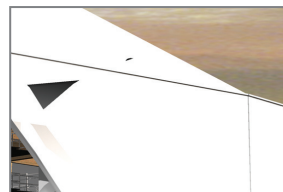
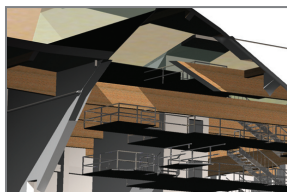


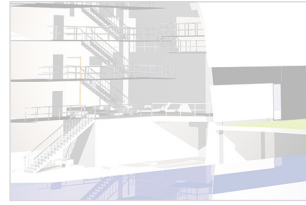
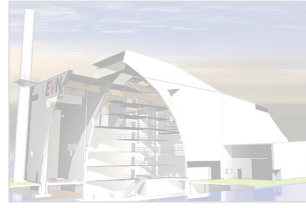
"Our partner worked with different CAD software, so we had to find a compatible interface. Allplan made it easy to implement those inevitable changes during all construction phases. Plus, all participants were able to edit our data without problems."

Siegbert Rosenstein,
Managing Director at SIR



New Biomass Power Plants for Green Electricity

Nemetschek AG
Konrad-Zuse-Platz 1
81829 Munich, Germany
tel. +49 89 92793-0
fax. +49 89 92793-5308
e-mail: info@nemetschek.com



"Our partner worked with different CAD software, so we had to find a compatible interface. Allplan made it easy to implement those inevitable changes during all construction phases. Plus, all participants were able to edit our data without problems."

*Siegbert Rosenstein,
Managing Director at SIR*

*Nemetschek AG
Konrad-Zuse-Platz 1
81829 Munich, Germany
tel. +49 89 92793-0
fax. +49 89 92793-5308
e-mail: info@nemetschek.com*

Natural Electricity and Heat Plant in Mödling & Baden, Austria

Since June 2006, the biomass power plants in Mödling and Baden in Lower Austria have been producing energy and heating for 20,000 residences each. The use of renewable Biomass means a significant reduction in CO2 emissions. The decision to build both plants was made in 2005. Due to significant urgency, a coordinator for implementation planning was consulted during the construction phase. The task was assigned to the engineering firm SIR/Siegbert Rosenstein in Drobollach, Austria. The firm specializes in unusual projects, including implementation of these two demanding construction projects. In contrast to "normal" construction projects, with interior design planning that precedes exterior planning, the process was reversed: the first step was design of the interior in the form of the required technology, and then the exterior was fitted with an appropriate shell.

This requires good coordination with the technical experts, structural designers and the construction firm. After all, the technology must fit precisely within the building. At the planning level, this requires CAD software with a flexible interface - a criterion that Allplan meets very well. With Allplan, the model could be entered in 3D in its entirety and then accessed for visualizations, calculations and quantity takeoffs. All relevant data existed in one program and could be distributed quickly to all planning partners.

About the Architect

The engineering firm SIR/Siegbert Rosenstein in Drobollach, Austria, is part of a network of four individual companies. Siegbert Rosenstein specializes in design and submission planning. More information: www.plan-sir.com

Products/Solutions

- Allplan Architecture
- Allplan Engineering
- Allplan Building Services
- Design2Cost
- Round-Trip Engineering
- CINEMA 4D

Project Data

Client
EVN Energieversorgung, Maria
Enzersdorf/Österreich

Planning and Construction
Verbundplan GmbH,
Villach/Österreich

Construction Costs
ca. 7.500.000 € / HKW

Square Footage
Gross Floor Area: ca. 3.820 m²
Gross Volume: ca. 49.000 m³

Construction Period
04/2005 - 02/2006