

# Allplan BIM 2008 Architecture Package



## The Interdisciplinary CAD Design Solution for Architects

The Allplan architecture package is the complete solution for discerning architects and designers. Unlike with traditional CAD systems, you do not need additional programs for layout and visualization. Quantity takeoff is already integrated and can be used for construction cost planning together with a tendering, awards and billing (TAI) system.

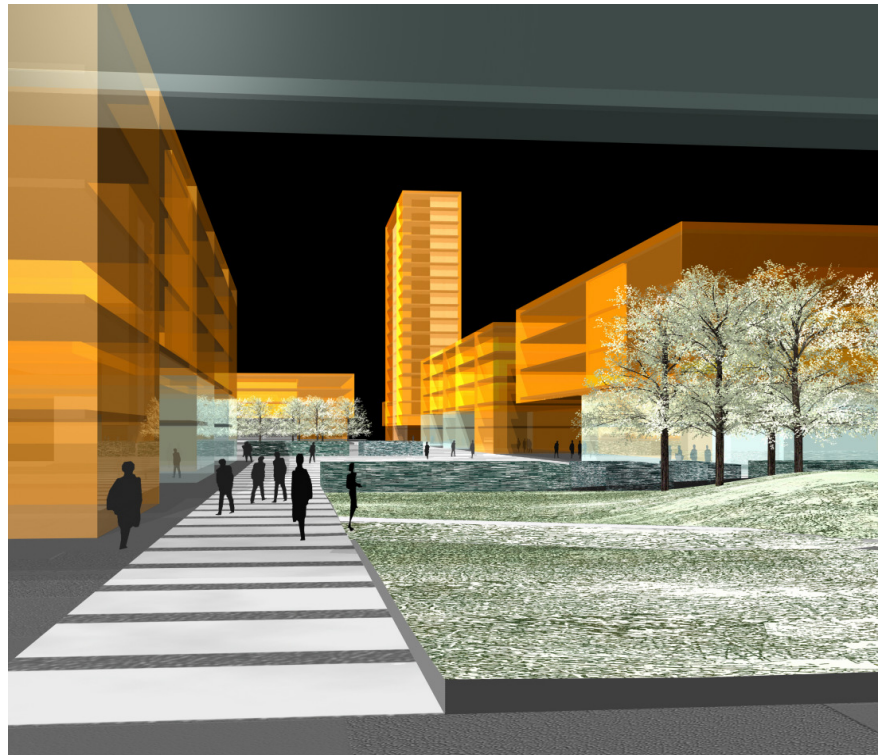
### Full Allplan Design package included

This package contains all the features of the Design package and builds on its functionalities for 2D design, 3D modeling, layout, design, and visualization.

### Component-oriented Building Planning

Allplan building planning enables a digital building model to be efficiently created. This serves as the basis for visualization and accurate building cost planning.

- ▶ Building model from intelligent architecture components (e.g. walls with multiple construction layers, curved walls, foundations, corner windows, window sills, installation masonry)
- ▶ Entry and editing of components in plan view, isometric view or in an animation window



Picture: Westend campus, Johann-Wolfgang-Goethe University in Frankfurt/Main, Architects pmp, Munich

- ▶ Animated preview when entering components
- ▶ Moving and changing of door and window openings easily with the mouse using handles
- ▶ Parametric design of windows, doors and planar façades
- ▶ Parametric design of standard and custom stair types taking account of regulations
- ▶ Design of all roof types (e.g. pitched roof, gambrel roof, barrel roof), dormers and complex "2roofscapes" including skylights
- ▶ Comfortable tools for filtering and finding architectural components
- ▶ Associative, architecture-specific dimension blocks created automatically

### Highlights of Allplan Architecture

- ▶ 2D Design
- ▶ 3D Modeling
- ▶ Layout and Design
- ▶ Object-oriented Building Planning
- ▶ Flexible Building Structure
- ▶ Easy Modeling Windows, Doors & Façades
- ▶ 1Click Stair Wizard
- ▶ Railing Modeler
- ▶ Rafter Design and Skeleton Construction
- ▶ Animations and Films
- ▶ Traceable, VOB-compliant quantity takeoff (TÜV-certified)
- ▶ Room and Area Calculation
- ▶ Comprehensive Interfaces
- ▶ Ideal for small and large projects and for lead consultants

### Flexible Building Structure

User-driven wizards permit customized Allplan data structures.

- ▶ Visual storey manager: Free assignment of height information
- ▶ Building structure for intuitive mapping of construction groups and organizational building units
- ▶ Semi-automated conversions for views, sections and lists from the component-oriented model

### Modeling of Windows, Doors and Façades

You can design windows, doors and complete façades to scale with Allplan with user-defined definition of the LOD (level of detailing).

- ▶ Highly parameterized modeling
- ▶ Scale-dependent or drawing type - dependent representation
- ▶ Fixed variant planning with wizards through façade element exchange
- ▶ Extensive list reports
- ▶ Creation of example catalog system

### Modeling of Railings and Fences

You can create linear, evenly subdivided building elements quickly and easily in Allplan.

- ▶ Highly-parameterized modeling of all types of protective elements
- ▶ Ideal for creating, processing and analyzing railings, fences, barriers, cornices etc.

### Skeleton Constructions

Allplan provides you with effective support for designing skeleton constructions for roofs, ceilings and walls.

- ▶ Modifiable rafter positioning
- ▶ Timber beamed ceiling

- ▶ Mapping of rod-shaped systems for wood and steel construction
- ▶ With standard profiles
- ▶ With custom profiles

### VOB-Compliant Quantity Takeoff

Using Allplan components you can quickly perform quantity takeoff calculations and based on the results, you can generate extensive analyses and evaluations. If you also use a tendering, awards and billing system such as Allplan BCM Building Costs (formerly Allright), you also benefit from added speed.

- ▶ Graphically supported, traceable quantity takeoff in accordance with VOB
- ▶ Dynamic, freely configurable reports on documents for reliable layout creation and maintenance (ideal supplement to room stamps)
- ▶ Consistent data thanks to common catalog access with Allplan BCM Building Costs
- ▶ Quantity transfer and update to the tendering, awards & billing system
- ▶ Quantity and costs tachometer in Allplan as plausibility check during planning
- ▶ Effective quantity takeoff in connection with Allright (TÜV-certified), so that real quantities can be determined without the details needing to be drawn
- ▶ Ongoing comparison and update of changes in Allplan or Allplan BCM Building Costs
- ▶ Automatic modification of surfaces in Allplan if a position is changed in Allplan BCM Building Costs
- ▶ Identification of quantities from Allplan BCM Building Costs through color display in the Allplan drawings

- ▶ Transfer of quantity takeoffs to TAI system using Allplan BCM Quantities (formerly Alltop) as link to Allplan.

### Evaluation of Rooms and Areas

Rooms and their finish specifications are available for analysis at touch of a button.

- ▶ Efficient room creations
- ▶ Area calculations
- ▶ Rapid determination of exact floor areas and contents of rooms and storeys of a building in accordance with the latest DIN 277 standard
- ▶ Automatic splitting of floor heights
- ▶ Categorization by occupancy type
- ▶ Individual room labeling
- ▶ Associative room labeling for geometry values and attributes
- ▶ Legend generator to analyze and visualize areas and rooms according to different criteria (e.g. for patterning plans for clients )
- ▶ Lists and schedules including graphics

### General Contracting – working in Partnership

Allplan offers a unique platform for integrated planning.

- ▶ Architects, engineers, structural designers, building service providers, facility manager and precast factories work on the basis of uniform CAD data
- ▶ Same user interface
- ▶ No external data formats
- ▶ Occupancy-specific attributes and evaluations

For additional information please contact your local Nemetschek dealer or visit us at our website at: [www.nemetschek.com](http://www.nemetschek.com).